

## Integrated QVR Surveillance

Ecosystem with AI and open architecture



Know more



Sales Inquiry

### QNAP SYSTEMS, INC.

[www.qnap.com](http://www.qnap.com)

**QNAP Systems, Inc.**  
New Taipei City  
Email: [sales@qnap.com](mailto:sales@qnap.com)  
Tel: +886 2 2641 2000

**QNAP Inc. (USA)**  
Pomona CA  
Email: [usasales@qnap.com](mailto:usasales@qnap.com)  
Tel: +1-909-595-2782

**QNAP Inc. (Canada)**  
Markham, Ontario  
Email: [canadasales@qnap.com](mailto:canadasales@qnap.com)  
Tel: +1-905-947-1000

**QNAP GmbH (Germany)**  
Willich  
Email: [desales@qnap.com](mailto:desales@qnap.com)  
Tel: +49-2154-88428-0

**QNAP SRL (Italy)**  
Roma  
Email: [eusales@qnap.com](mailto:eusales@qnap.com)  
Tel: +39-(0)687-738456

**QNAP UK Limited**  
Swindon  
Email: [uksales@qnap.com](mailto:uksales@qnap.com)  
Tel: +44-(0)333-344-2522

**QNAP Japan**  
Tokyo  
Email: [jpsales@qnap.com](mailto:jpsales@qnap.com)  
Tel: +81-3-5901-9735

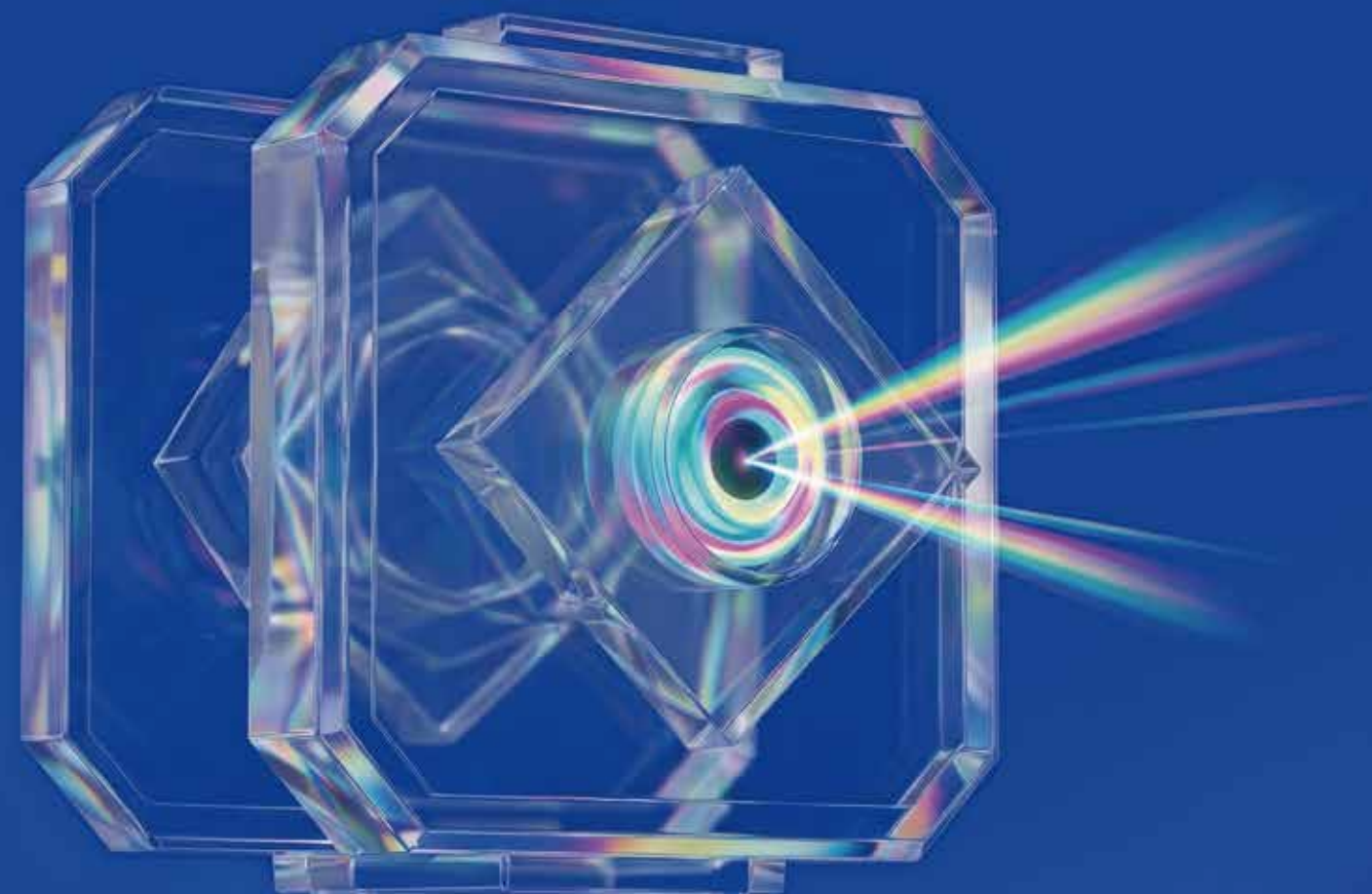
**QNAP Korea**  
Seoul  
Email: [krsales@qnap.com](mailto:krsales@qnap.com)



Copyright © 2026 QNAP Systems, Inc. All rights reserved.  
QNAP® and other names of QNAP Products are proprietary marks or registered trademarks of QNAP Systems, Inc. Other products and company names mentioned herein are trademarks of their respective holders. QNAP reserves the right to modify or revise this guide and related statements at any time. Product specifications and descriptions are subject to change without notice.

**QNAP**

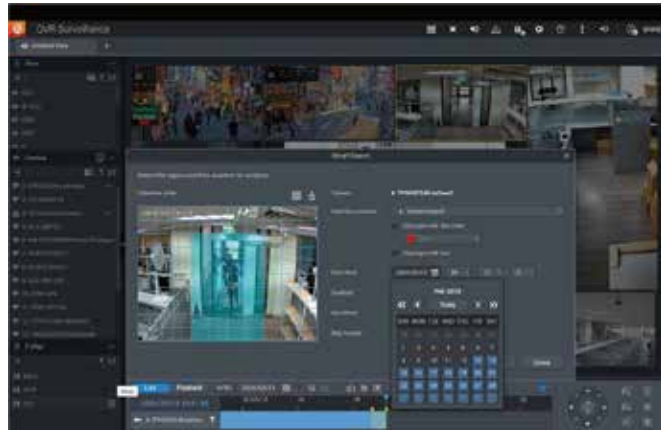
**2026  
COMPUTEX**  
READY and RECOVERY



## Integrated QVR Surveillance

Ecosystem with AI and open architecture

## Actionable Insights from QVR Client

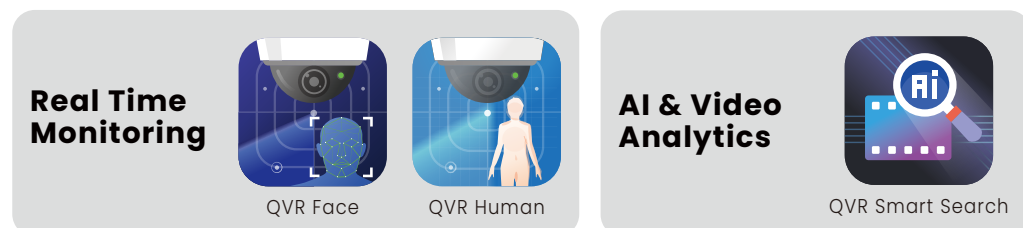


Smart Search in action: Filtering for 'Humans' wearing 'Red' in a specific detection zone.

- Use attribute filters to quickly locate events
- Unified interface for PC, Mac, and mobile
- Real-time alerts allow instant playback.
- Multi-screen support for control rooms.
- Allows simultaneous local viewing and remote multi-user access.

## AI Orchestration: Internal & External

- Ready-to-use Built-in QVR Face (Recognition) and QVR Human (People Counting/Intrusion) powered by local NAS hardware.
- External Integration as a Hub to receive metadata from Third-party AI Cameras or External AI Servers via API/Webhook.
- Provide dashboard to visualize alerts from diverse AI sources (Internal + External) and do actions based on alerts.



## How QNAP makes surveillance without stress?

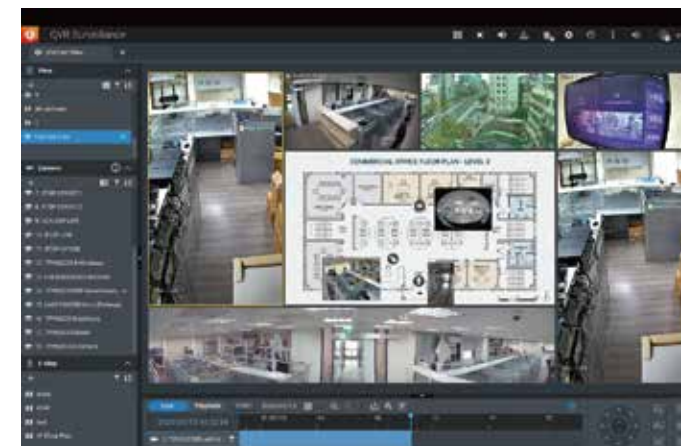
- Lower TCO: Perpetual licenses (CapEx) vs. Recurring Cloud Subscriptions (OpEx). "Active Warm Archiving" reduces long-term storage costs.
- Trust & Compliance: NDAA compliant, ensuring data sovereignty and security.
- Future-Proof Flexibility: Software-defined architecture allows you to add new AI capabilities via Containers without replacing hardware.
- All-in-One convergence (NVR + Storage + AI) reduces power consumption and rack footprint.



## Enterprise-Level Infrastructure

- Built-in CPU, NPU, or GPU for event detections.
- Supports high-speed connectivity to handle large volumes of cameras efficiently.
- Quick disaster recovery by disk replacement.
- Storage designed for compliance, enabling long-term retention

## Unified & Open VMS



- One license provides full feature.
- Support ONVIF, no camera vendor lock-in.
- Deep API integration for AI events with smart cameras and external AI boxes.
- AD/LDAP integration & central management.
- Detailed permission control for every account & group.